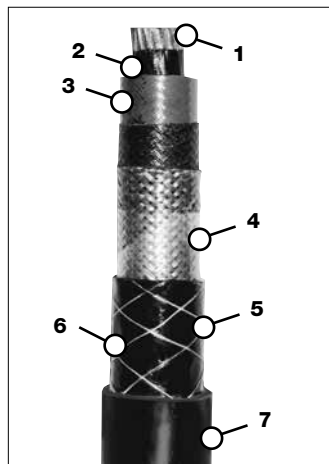


Super-Trex® Type SH Single Conductor Power Cable/Assemblies

- ASTM B-33
- IEEE - 383 Flame Rating
- RoHS Compliant
- CSA
- ICEA S-75-381/NEMA WC-58
- FT-4 Flame Rating
- Max Conductor Temp 90°C



FEATURES & BENEFITS

- 1. CONDUCTOR** — High flex tin coated bunch stranded copper conductors, for long life in harsh environments.
- 2. CONDUCTOR SHIELD** — Combination of semi-conducting tape and extruded semi-conductive TSE.
- 3. INSULATION** — EPR insulation provides protection from moisture, heat and ozone.
- 4. INSULATION SHIELD** — Tin coated braid shield placed over semi-conductive tape.
- 5. INNER JACKET** — Heavy-duty TSE provides added strength.
- 6. REINFORCEMENT †** — Rayon tire cord reinforcing, improves cable resistance to pulling and twisting.
- 7. OUTER JACKET** — Extra heavy-duty TSE jacket provides excellent protection against industrial and environmental abuse. Resists tearing, abrasion, oil, impact, ozone and most chemicals.

ORDERING INFORMATION (MINIMUM PURCHASE MAY BE REQUIRED IF PRODUCT NOT STOCKED)

VOLTAGE/ JACKET COLOR*	PART NO.	CABLE SIZE	CONDUCTOR STRANDING	AMPACITY ¹	INSULATION THICKNESS (IN)	JACKET THICKNESS (IN)	NOMINAL O.D. (IN)	WT. (LBS) PER 1000 ¹
5kV BLACK	70502	2	259	190	0.110	0.125	0.975	674
	70540	4/0	532	400	0.110	0.155	1.300	1393
	70525	250	627	445	0.120	0.155	1.300	1477
	70535	350	888	550	0.120	0.170	1.490	1926
	70550	500	1221	695	0.120	0.190	1.700	2662
15kV BLACK	70102	2	259	195	0.210	0.155	1.203	881
	70110	1/0	266	260	0.210	0.155	1.325	1147
	70140	4/0	532	400	0.210	0.170	1.497	1594
	70125	250	608	445	0.210	0.170	1.550	1760
	70135 †	350	888	550	0.210	0.190	1.765	2364
	70150 †	500	1221	685	0.210	0.190	1.900	2937
25kV BLACK	70201	1	259	225	0.260	0.170	1.450	1170
	70210	1/0	266	260	0.295	0.170	1.500	1350
	70240 †	4/0	532	395	0.295	0.190	1.713	1909
	70225	250	627	440	0.295	0.190	1.765	2085
	70235 †	350	888	545	0.295	0.190	1.886	2517
	70250 †	500	1221	680	0.295	0.205	2.048	3168
	70275** †	750	1850	870	0.295	0.205	2.253	4253
35kV BLACK	70310	1	259	225	0.340	0.170	1.623	1465
	70316	1/0	266	260	0.340	0.170	1.725	1632
	70340 †	4/0	532	395	0.340	0.205	1.895	2235
	70325 †	250	608	440	0.340	0.205	1.960	2429
	70335 †	350	888	545	0.340	0.205	2.100	2901
	70350 †	500	1221	680	0.340	0.205	2.280	3396

NOTES: (1) Allowable ampacity per conductor of insulated single conductor in air based on conductor temperature of 90°C and ambient air temperature of 40°C. NEC Table 310.60(C)(69).
 *Jacket color may vary.
 **Not CSA approved
 †These cables include rayon reinforcement.

Super-Trex® Type SH Single Conductor Power Cable/Assemblies (Continued)

TPC's Type SH Single Conductor Power Cable is a highly flexible single conductor shielded medium voltage cable designed to ICEA standards. An extra heavy-duty TSE jacket provides excellent protection against tearing, abrasion, oil, impact and most industrial chemicals. Available in voltages from 5kV to 35kV. Ideal for applications where flexibility and ease of use is required. TPC can also add a connector to this cable and deliver a complete assembly — ready to install. A full testing report is provided to certify the testing and ensure the highest quality workmanship and traceability of the “ready to install” assembly.

We stock the product so you don't have to! TPC Wire & Cable carries deep inventories of medium voltage power cables and allows you to buy just the amount you need for your specific application.

Custom Cutting and Packaging Service. TPC will cut the cable to length for you and pack the product to your specific requirements. You will receive the product in the lengths you require ready to be installed.

Buy it Connectorized:

- Factory installed medium voltage terminations – standard or customized to meet your specific requirements.
- Factory installed load break elbows.
- Cut, packaged and shipped ready for installation.

Available 2 AWG to 750 MCM

5kV BLACK	15kV BLACK	25kV BLACK	35kV BLACK
---------------------	----------------------	----------------------	----------------------

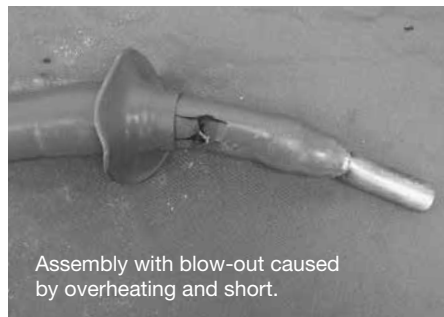
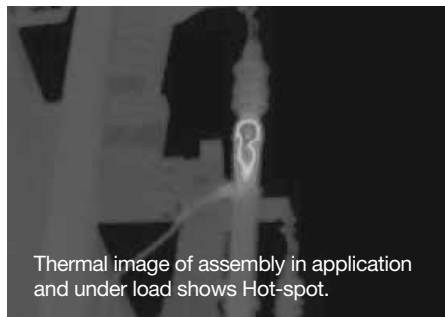
NOTE: Jacket color may vary

MEDIUM VOLTAGE CABLE ASSEMBLY TESTING

TPC Wire & Cable Corp. tests all Medium and High Voltage assemblies prior to leaving our facility. All assemblies are tested in accordance with the ANSI/NEMA WC 58-2008, 6.17 electrical test requirements. A full testing report is provided to certify the testing and to ensure the highest quality workmanship and traceability of the ready to install assembly.

Damaging an assembly is easy to do but hard to detect until it is too late. **TPC provides 100% AC or DC Hi-pot testing on all assemblies before they leave our facility – giving you 100% peace of mind.**

AVOID UNTESTED CABLE ASSEMBLIES



APPLICATIONS

- Mobile substation power cable
- Portable transformers
- Temporary/emergency medium voltage power

