

Medium High Voltage Cable Assembly Testing (5kV-69kV)

TPC Wire & Cable Corp. tests all Medium and High Voltage Assemblies prior to leaving our facility. All assemblies are tested in accordance with the ANSI/NEMA WC 58-2008, 6.17 electrical test requirements. A full testing report is provided to certify the testing and ensure the highest quality workmanship and traceability of the ready-to-install assembly.

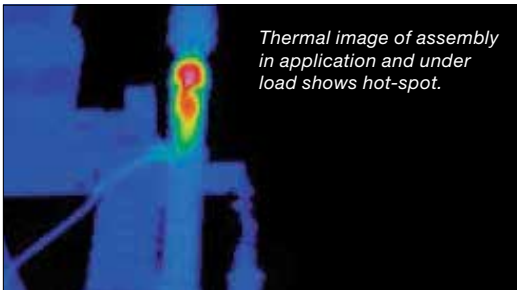
Damaging an assembly is easy to do but may be hard to detect until it's too late. TPC provides 100% AC or DC Hi-pot testing on all assemblies (5kV-69kV) before they leave our facility — giving you 100% peace of mind.



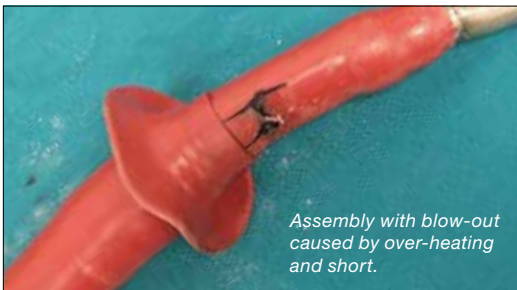
Avoid Untested Cable Assemblies



Actual failure determined to have been caused by damage to insulation during installation of the termination kit.



Thermal image of assembly in application and under load shows hot-spot.



Assembly with blow-out caused by over-heating and short.

TEST REPORT

TEST LOCATION:	TPC Wire & Cable
CONTACT:	Jay Hathaway
PART ANALYZED:	Cable Assemblies - 25kV - 750 MCM MA28400F100 - 6 Units - 100 ft long
LABORATORY CONDITIONS:	72.5°F / 58% RH
TESTS PERFORMED BY:	B. Warner & J.Kotar

DISCUSSION

Voltage test per ANSI/NEMA WC 58-2008, 6.17 electrical tests on completed cables at the agreed upon AC test voltage (test at rated cable voltage) 25kV.

6.17.1.2 AC VOLTAGE TEST

The 25kV AC voltage is to be applied to each sample between the conductor and shield for a period of five minutes. The Pass/Fail criteria for each sample will be its ability to withstand the test voltage over the test duration.

- Sample #1, 25kV 750MCM - 100 ft long, Tested at 25kV AC for 5 minutes: PASS
- Sample #2, 25kV 750MCM - 100 ft long, Tested at 25kV AC for 5 minutes: PASS
- Sample #3, 25kV 750MCM - 100 ft long, Tested at 25kV AC for 5 minutes: PASS
- Sample #4, 25kV 750MCM - 100 ft long, Tested at 25kV AC for 5 minutes: PASS
- Sample #5, 25kV 750MCM - 100 ft long, Tested at 25kV AC for 5 minutes: PASS
- Sample #6, 25kV 750MCM - 100 ft long, Tested at 25kV AC for 5 minutes: PASS

REFERENCES

- ANSI/NEMA WC 58-2008, 6.17 electrical tests on completed cables
- TPC Wire & Cable Purchase Order #37521